

## 2014 Free Microsoft 70-687 Exam Study Guide(171-180)

QUESTION 171 Drag and Drop Question A company has Windows 8.1 client computers. All computers have the same hardware and software installed. The Development and Sales departments have different backup requirements. The requirements are described in the following table. &#160;

Development department	Sales department
<ul style="list-style-type: none"> <li>The backup process must support multiple system image backups.</li> <li>The backup file must be accessible to users in the network.</li> <li>The backup file must not be in the same location as the operating system.</li> <li>The backup file must not be accessible to other users.</li> </ul>	<ul style="list-style-type: none"> <li>The backup location must be available from any location on the network.</li> <li>The backup file must be available to back up client computers.</li> <li>The backup file must be available if the client computer fails.</li> </ul>

You need to select a backup location for each department. What should you do? (To answer, drag the appropriate resource to the correct location or locations in the answer area. Resources may be used once, more than once, or not at all. You may need to drag the split bar between panes or scroll to view content.) &#160;

**Resources**

-  Local Disk (C:)
-  DVD RW Drive (D:)
-  NetworkLocation 1 (Z:)
-  ExternalDrive (E:)

**Answer Area**

	Development	Sales
Resource	Resources	Resources

Answer: &#160;

**Resources**

-  Local Disk (C:)
-  DVD RW Drive (D:)
-  NetworkLocation 1 (Z:)
-  ExternalDrive (E:)

**Answer Area**

	Development	Sales
Resource	 ExternalDrive (E:)	 NetworkLocation 1 (Z:)

**QUESTION 172** A company has an Active Directory Domain Services (AD DS) domain. All client computers run Windows 8.1. A client computer named COMPUTER1 has a shared printer named PRINTER1 installed and Remote Desktop enabled. A user named Intern is a member of a security group named Sales. The Sales group is a member of the Remote Desktop Users group on COMPUTER1. Only the Sales group has access to PRINTER1. You need to configure COMPUTER1 to meet the following requirements:

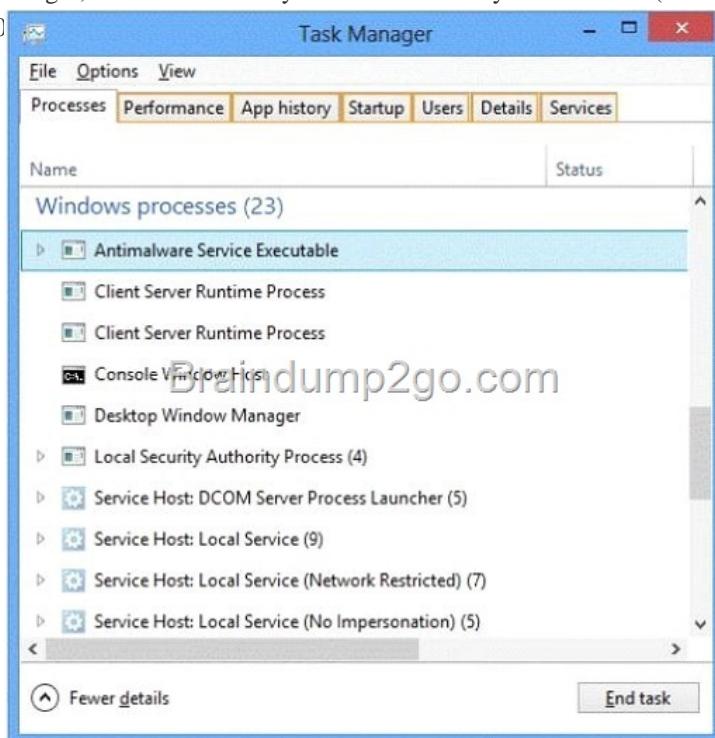
- Allow all members of the Sales group other than Intern to establish Remote Desktop connections to COMPUTER1.
- Allow Intern to print to PRINTER1.

What should you do? A. Assign Intern the Deny access to this computer from the network user right. Assign the Sales group the Allow log on locally user right. B. Assign Intern the Deny log on through Remote Desktop Services user right. C. Remove the Sales group from the Remote Desktop Users group. D. Remove Intern from the Sales group.

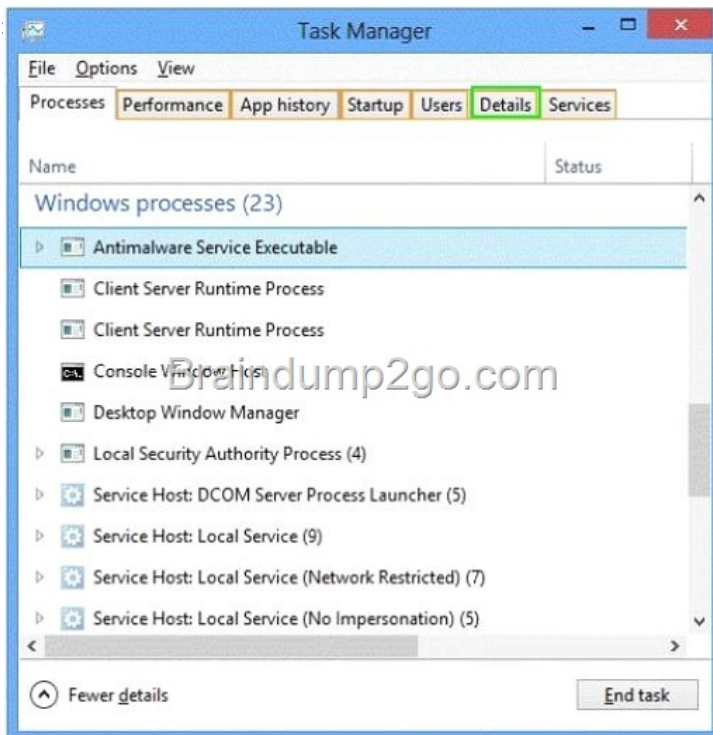
Answer: B **QUESTION 173** A company has an Active Directory Domain Services (AD DS) domain. The corporate environment includes a Windows Software Update Services (WSUS) server. All client computers run Windows 8.1 and a custom web application. The company has a Microsoft Software Assurance for Volume Licensing agreement. After deploying Windows Updates to the computers, the web application stops responding. You establish that a specific optional update installed by Windows Update is causing the problem. In the Windows Update Control Panel item, the option to remove the update is unavailable. You need to remove only the optional update from one client computer. What should you do? A. Restart the computer from a Diagnostic and Repair Toolset (DaRT) boot disk and use the Hotfix Uninstaller tool. B. From the c:\Windows folder, open the \$NTUninstallKBxxxx folder for the update and run the uninstall command. C. Start the computer by using the Last Known Good Configuration option. D. use System Restore to restore the computer to a point before the update was installed. E. Run the Update-Sources Windows PowerShell cmdlet.

Answer: A **QUESTION 174** You add two hard drives to a Windows 8.1 computer. The computer does not have a RAID controller. You plan to store data only on the two new hard drives. You need to ensure that data loss will not occur if only one hard drive fails. What should you do? A. Create a spanned volume. B. Create a storage pool that contains both drives and set the resiliency type to Two-way mirror. C. Create a storage pool that contains both drives and set the resiliency type to Parity. D. Create a storage pool that contains one drive, and then add the second drive to the pool.

Answer: B **QUESTION 175** Hotspot Question You administer Windows 8.1 Enterprise computers in your company network. One of the computers indicates high memory utilization. You open Task Manager on the computer and discover that a process named Antimalware Service Executable consumes 30% of available memory. You need to identify the account that is used to run the process. In Task Manager, which tab should you select to identify the account? (To answer, select the appropriate tab in the answer area.)



Answer: &#160;



QUESTION 176 A company plans to deploy Windows 8.1 to 100 client computers. Each client computer has 8 GB of memory. You have the following requirements: - Ensure that the operating system fully utilizes the available memory. - Ensure that the operating system can be activated by using a Key Management Service (KMS) client setup key. - Minimize the operating system space requirements. You need to identify the appropriate edition of Windows 8.1 to install on the client computers. Which edition should you install? A.&#160;&#160;&#160;&#160; Windows 8.1 Enterprise 32-bit B.&#160;&#160;&#160;&#160; Windows 8.1 64-bit C.&#160;&#160;&#160;&#160; Windows 8.1 Pro 32-bit D.&#160;&#160;&#160;&#160; Windows 8.1 Enterprise 64-bit

E.&#160;&#160;&#160;&#160; Windows 8.1 Pro 64-bit F.&#160;&#160;&#160;&#160; Windows 8.1 32-bit Answer: D QUESTION 177 A company has 100 client computers that run various editions of Windows 7. The company plans to upgrade or replace computers so that all client computers run an edition of Windows 8.1. The company plans to use the following programs and features on the Windows 8 computers: - 32-bit and 64-bit software - Desktop apps - Windows Media Player - Storage Spaces You need to identify the installation or upgrade paths that support the programs and features. Which three paths meet the requirements? (Each correct answer presents a complete solution. Choose three.) A.&#160;&#160;&#160;&#160; Attach the VHD file by using Disk Management. B.&#160;&#160;&#160;&#160; Import the contents of the system store from a file. C.&#160;&#160;&#160;&#160; Export the contents of the system store into a file. D.&#160;&#160;&#160;&#160; Make the VHD disk bootable. E.&#160;&#160;&#160;&#160; Create a new empty boot configuration data store. F.&#160;&#160;&#160;&#160; Create a new entry in the boot configuration data store.

Answer: ABC QUESTION 178 You administer desktop computers in your company network. You are developing User State Migration Tool (USMT) procedures. You need to ensure that the files located in C:\projects are included in the migration package. What should you do? &#160;

A. Include the following code segment in the custom.xml file:

```
<include>  
  <pattern type="File">C:\projects\* [*]</pattern>  
</include>
```

B. Include the following code segment in the custom.ini file:

```
patterntype = Folder  
objectSet = C:\projects\*
```

Braindump2go.com

C. Include the following code segment in the custom.xml file:

```
<objectSet>  
  <pattern type="File">C:\projects\* [*]</pattern>  
</objectSet>
```

D. Include the following code segment in the custom.ini file:

```
patterntype = File  
objectSet = C:\projects\*.*
```

A. Option A B. Option B C. Option C D. Option D Answer: C QUESTION 179 Drag and Drop Question You administer Windows XP and Windows 7 client computers in your company network. You add 100 new client computers that have Windows 8.1 Enterprise installed. You need to migrate user profiles, local groups membership, and network mapped drives to the new client computers. You download and copy User State Migration Tool (USMT) files to a network share. Which three actions should you perform next, in sequence? (To answer, move the appropriate three actions from the list of actions to the answer area and arrange them in the correct order.)

Actions	Answer Area
Run the System Preparation (Sysprep) tool on the Windows 8 computers.	
Run the LoadState tool on the Windows 8 computers.	
Modify the custom.xml file.	
Run the System Preparation (Sysprep) tool on the Windows XP and Windows 7 computers.	
Modify the custom.ini file.	
Run the ScanState tool on the Windows XP and Windows 7 computers.	

Braindump2go.com

Answer: C

Actions	Answer Area
Run the System Preparation (Sysprep) tool on the Windows 8 computers.	Modify the custom.xml file.
Run the LoadState tool on the Windows 8 computers.	Run the ScanState tool on the Windows XP and Windows 7 computers.
Modify the custom.xml file.	Run the LoadState tool on the Windows 8 computers.
Run the System Preparation (Sysprep) tool on the Windows XP and Windows 7 computers.	
Modify the custom.ini file.	
Run the ScanState tool on the Windows XP and Windows 7 computers.	

Braindump2go.com

QUESTION 180 A company has a Windows 8.1 client computer with secure boot enabled. You install a third-party adapter with an Option ROM in the computer. When you start the computer, it starts in the Windows Recovery Environment (Windows RE). You need to ensure that the computer starts normally. What should you do? A. Configure a system boot password from the system BIOS. B. Disable C-State configuration from the system BIOS.

C. Replace the third-party adapter with an adapter that is signed by a trusted Certificate Authority (CA).  
D. Enable hardware virtualization from the system BIOS. E. Activate the Trusted Platform Module (TPM). Answer: C Download Free Microsoft 70-687 Exam Questions and Answers from Braindump2go:  
<http://www.braindump2go.com/70-687.html>