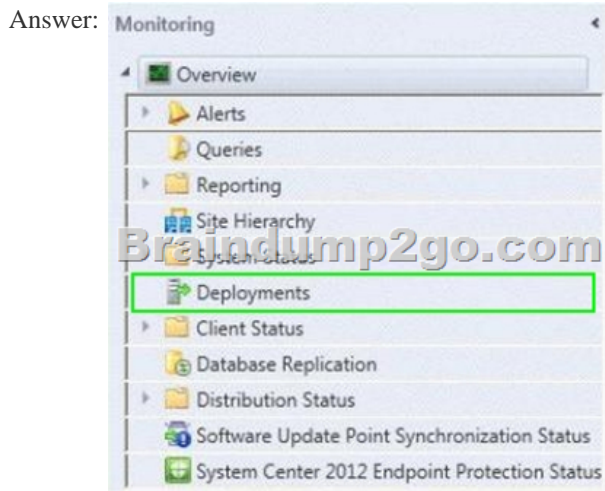
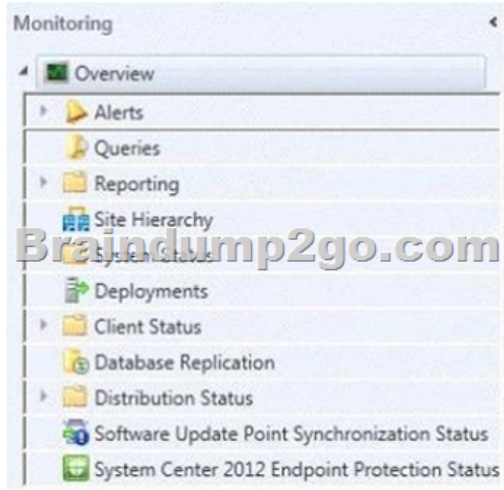


## (Jun-2016-Updated)70-243 Study Guide Free Download in Braindump2go(NQ61-NQ70)

2016 June Microsoft Official: 70-243 PDF & 70-243 VCE Dumps with 154Q New 70-243 Exam Questions New Updated By Braindump2go.com Today! Free Dowload 70-243 Exam Dumps Today! 100% Exam Pass Guaranteed! NEW QUESTION 61 - NEW QUESTION 70 QUESTION 61 Hotspot Question Your network contains a System Center 2012 Configuration Manager environment. You deploy an application to 1,000 client computers. You need to identify which client computers are in the process of installing the application. Which node should you select in the Configuration Manager console? To answer, select the appropriate node in the answer area.



Explanation: <http://technet.microsoft.com/en-us/library/gg682201> How to Monitor Applications in Configuration Manager In Microsoft System Center 2012 Configuration Manager, you can monitor the deployment of all software, including software updates, compliance settings, applications, task sequences, and packages and programs. You can monitor deployments by using the Monitoring workspace in the Configuration Manager console or by using reports. Applications in Configuration Manager support state-based monitoring, which allows you to track the last application deployment state for users and devices. These state messages display information about individual devices. For example, if an application is deployed to a collection of users, you can view the compliance state of the deployment and the deployment purpose in the Configuration Manager console. An application deployment state has one of the following compliance states: Success - The application deployment succeeded or was found to be already installed. In Progress - The application deployment is in progress. Unknown - The state of the application deployment could not be determined. This state is not applicable for deployments with a purpose of Available. This state is typically displayed when state messages from the client are not yet received. Requirements Not Met - The application was not deployed because it was not compliant with a dependency or a requirement rule, or because the operating system to which it was deployed was not applicable. Error - The application failed to deploy because of an error. To monitor the state of an application in the Configuration Manager

console In the Configuration Manager console, click Monitoring. In the Monitoring workspace, click Deployments. To review deployment details for each compliance state and the devices in that state, select a deployment, and then, on the Home tab, in the Deployment group, click View Status to open the Deployment Status pane. In this pane, you can view the assets with each compliance state. Click any asset to view more detailed information about the deployment status to that asset. To review general status information about an application deployment, select a deployment, and then click the Summary tab in the Selected Deployment window. To review information about the applications deployment type, select a deployment, and then click the Deployment Types tab in the Selected Deployment window.

QUESTION 62 Your network contains a System Center 2012 Configuration Manager environment. Software Inventory and Hardware Inventory are enabled for all client computers. All of the client computers have an application named App1 installed. App1 saves files to the C:\Program Files\App1 folder. All of the files saved by App1 have a file name extension of .xyz. You configure Software Inventory to inventory all of the files that have the .xyz extension and the .exe extension. After six months, you discover that some of the client computers fail to inventory .xyz files. All of the client computers inventory .exe files. You need to ensure that the .xyz files are inventoried. What should you do?

A. Modify C:\Program Files\App1\Skpswi.dat.  
B. Modify C:\NO\_SMS\_On\_Drive.sms.  
C. Delete C:\Program Files\App1\Skpswi.dat.  
D. Delete C:\NO\_SMS\_On\_Drive.sms.

Answer: C  
Explanation: <http://technet.microsoft.com/en-us/library/hh691018.aspx> How to Exclude Folders from Software Inventory in Configuration Manager

You can create a hidden file named Skpswi.dat and place it in the root of a client hard drive to exclude it from System Center 2012 Configuration Manager software inventory. You can also place this file in the root of any folder structure you want to exclude from software inventory. This procedure can be used to disable software inventory on a single workstation or server client, such as a large file server.

Note: Software inventory will not inventory the client drive again unless this file is deleted from the drive on the client computer.

QUESTION 63 Your network contains a System Center 2012 Configuration Manager environment. You deploy the Configuration Manager client to all client computers. You enable Hardware Inventory and Software Inventory for all of the client computers. You discover that one of the client computers fails to report inventory data. You confirm that the inventory files are copied correctly to the site server. You discover, however, that the site server does not contain any data from the client computer. You need to identify what is causing the reporting issue. Which log file should you review?

A. Dataldr.log  
B. Inventoryagent.log  
C. Mp\_hinv.log  
D. Contenttransfermanager.log

Answer: A  
Explanation: <http://technet.microsoft.com/en-us/library/hh427342.aspx> Technical Reference for Log Files in Configuration Manager

dataldr.log Site Server log file Records information about the processing of Management Information Format (MIF) files and hardware inventory in the Configuration Manager database.

Further information 1: Mp\_hinv.log Site system server log file Records details about the conversion of XML hardware inventory records from clients and the copy of those files to the site server.

InventoryAgent.log Client log file Records activities of hardware inventory, software inventory, and heartbeat discovery actions on the client.

Contenttransfermanager.log Client log file Schedules the Background Intelligent Transfer Service (BITS) or the Server Message Block (SMB) to download or to access packages.

Further information 2: <http://technet.microsoft.com/en-us/library/bb932206.aspx> Troubleshooting Configuration Manager Performance

Slow Hardware Inventory Processing - Solution

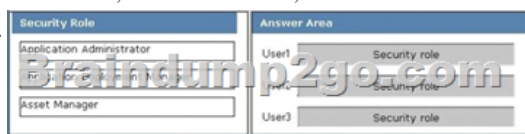
If you suspect that hardware inventory report processing is slow for a Configuration Manager 2007 site, the following actions should be taken:

Inspect the client inventoryagent.log log file to determine whether the client is sending delta hardware inventory reports or full reports. After initial client deployment, a very high percentage of hardware inventory reports should be deltas, which contain much less data than full inventory reports. If you are seeing a significant number of full inventory reports, this could be caused by inconsistent inventory report processing by the site server. For example, a delta hardware inventory report could be processed before a full inventory report for the same system has been processed. In this situation, a hardware inventory resynchronization request will be sent to the client and an additional full inventory report will be generated. To determine whether this is happening, review the dataldr.log log file on the site server. Inspect the size of the hardware inventory files in the site server's inbox directory to determine whether the software inventory files have grown significantly from previous inventory reports. If hardware inventory report file sizes have grown beyond an initial hardware inventory report file size baseline, you should determine the cause and whether the larger inventory report files are expected to be larger. One possibility is that the site's SMS\_def.mof file has been modified to collect more inventory information from clients. Determine whether there is a consistent SMS\_def.mof hardware inventory reporting file in use throughout the hierarchy. If not, the hardware inventory processor might be running very slowly because of changes in the database schema caused by the different SMS\_def.mof files throughout the hierarchy. The dataloader.log log file will record instances of database schema changes and should be reviewed when investigating this issue. This article was originally written for SMS, but the same principles should apply to SCCM 2012: <http://technet.microsoft.com/en-us/library/cc723597.aspx>

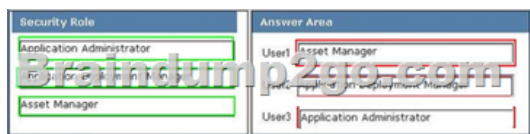
Chapter 20 - Hardware and Software Inventory Flowcharts

If a backlog of MIF files accumulates at the site server (that is, if MIF files are not being processed): Examine the Inventory Data Loader status

messages or the Dataldr.log file to determine whether the Inventory Data Loader has been able to connect to the SMS site database server. Inventory Data Loader might be unable to write a discovered client's MIF to the database. If the MIF files are not being processed on the site server: Verify that Inventory Data Loader successfully parsed the MIF file by checking Inventory Data Loader status messages or the Dataldr.log file. If the MIF file cannot be processed, it will be transferred to the Badmifs directory. If inventory from clients is not being reported to a new parent site: Examine the Dataldr.log file to verify that Inventory Data Loader has read the \*.sha file, stopped all new MIF file processing, and is creating MIF files for each client's data in the site database to forward to the parent site. QUESTION 64Note: This question is part of a series of questions that use the same set of answer choices. An answer choice may be correct for more than one question in the series. Your network contains a System Center 2012 Configuration Manager environment. The network contains 10 database servers that run Microsoft SQL Server 2008. You have a configuration baseline that is used to monitor the database servers. You confirm that all of the database servers downloaded the configuration baseline. You discover that a database server named Server1 fails to report any data for the configuration baseline. You need to identify whether Server1 evaluates the configuration items that are part of the configuration baseline. Which log file should you review? A. Ciagent.logB. Sitestat.logC. Ccm.logD. Rcmctrl.logE. Smsexec.logF. Dcmagent.logG. Hman.logH. Contenttransfermanager.logI. Sdmagent.logJ. Wsyncmgr.logK. Locationservices.log Answer: FExplanation: <http://technet.microsoft.com/en-us/library/hh427342.aspx> DCMAGENT.logRecords high-level information about the evaluation, conflict reporting, and remediation of configuration items and applications. QUESTION 65Note: This question is part of a series of questions that use the same set of answer choices. An answer choice may be correct for more than one question in the series. Your network contains a System Center 2012 Configuration Manager environment. You add a software update point to the environment. You receive a message indicating that SMS WSUS Synchronization failed. You need to retrieve additional information about the message. Which log file should you review? A. Ciagent.logB. Contenttransfermanager.logC. Sdmagent.logD. Dcmagent.logE. Locationservices.logF. Wsyncmgr.logG. Rcmctrl.logH. Ccm.logI. Sitestat.logJ. Smsexec.logK. Hman.log Answer: FExplanation: <http://technet.microsoft.com/en-us/library/hh427342.aspx> Wsyncmgr.logRecords details about the software updates synchronization process QUESTION 66Note: This question is part of a series of questions that use the same set of answer choices. An answer choice may be correct for more than one question in the series. You enable Client Push. You run Active Directory System Discovery. You discover that some of the discovered computers do not have the System Center 2012 Configuration Manager client installed. You need to identify why Client Push fails on some of the client computers. Which log file should you review? A. Sdmagent.logB. Dcmagent.logC. Rcmctrl.logD. Smsexec.logE. Locationservices.logF. Contenttransfermanager.logG. Ccm.logH. Wsyncmgr.logI. sitestat.logJ. Ciagent.logK. Hman.log Answer: GExplanation: <http://technet.microsoft.com/en-us/library/hh427342.aspx> CCM.logRecords client push installation activities. QUESTION 67Drag and Drop QuestionYour network contains a System Center 2012 Configuration Manager environment. Three users named User1, User2, and User3 will perform the following tasks:- User1 will review software metering data and inventory reports.- User2 will deploy applications and create alerts.- User3 will deploy applications and create distribution point groups. You need to identify which security role must be assigned to which user. What should you identify? To answer, drag the appropriate security role to the correct user in the answer area. Each security role may be used once, more than once, or not at all. Additionally, you may need to drag the split bar between panes or scroll to view content.



Answer:



Explanation: Application AdministratorThis security role: Provides permissions included in both the Application Author and Application Deployment Manager roles. Provides permissions to manage queries, read and modify site permissions, manage collections, and manage settings for user device affinity. Application Deployment ManagerThis security role provides permissions to: View applications and manage deployments, alerts, templates, packages, and programs. View collections and their members, status messages, queries, and conditional delivery rules. Asset ManagerThis security role provides permissions to manage hardware and software inventory, software metering, and the Asset Intelligence reporting classes. QUESTION 68Your network contains a

System center 2012 Configuration Manager environment. The environment contains a reporting services point. A group of users is responsible for creating custom reports. The custom reports will be published. You need to identify which tools can be used to create and publish custom reports to Microsoft SQL Server Reporting Services (SSRS). Which tools should you identify? A. Reporting Services Configuration Manager B. Microsoft SQL Server Management Studio C. Microsoft SQL Server Business Intelligence Development Studio D. Microsoft Access 2010 and Reporting Services Configuration Manager Answer: C Explanation: <http://technet.microsoft.com/en-us/library/gg508710.aspx> Overview of Custom Reports Custom reports are intended for advanced users who are comfortable creating their own reports by using Microsoft SQL Server Reporting Services and SQL Server Business Intelligence Development Studio, SQL Server Reporting Services Report Builder, or Microsoft Visual Studio Report Designer. Further information: [http://msdn.microsoft.com/en-us/library/ms155792\(v=sql.100\)](http://msdn.microsoft.com/en-us/library/ms155792(v=sql.100)) Reporting Services Components and Tools <http://msdn.microsoft.com/en-us/library/ms345231.aspx> Custom Report Items <http://msdn.microsoft.com/en-us/library/ms345253> Custom Report Item Implementation Requirements <http://technet.microsoft.com/en-us/library/gg682105.aspx> Introduction to Reporting in Configuration Manager <http://technet.microsoft.com/en-us/library/hh338693.aspx> Creating Custom Report Models in SQL Server Reporting Services QUESTION 69 Your network contains a System Center 2012 Configuration Manager environment. You write the following query: select SYS.Name from SMS\_R\_System SYS join SMS\_G\_System\_ADD\_REMOVE\_PROGRAMS ARP on ARP.ResourceID = SYS.ResourceID You need to create a list of all the client computers that have a version of Microsoft Office installed. What should you add to the query? A. where ARP.DisplayName like "Microsoft Office\*" B. where ARP.DisplayName = "Microsoft Office\*" C. where ARP.DisplayName like "Microsoft Office%" D. where ARP.DisplayName = "%Microsoft Office" Answer: C Explanation: <http://technet.microsoft.com/en-us/library/bb694123> For relational operators that perform LIKE comparisons ("is like" or "is not like"), you can use wildcard characters within the string. You can use the following wildcards. Wildcard Description % Any string of zero or more characters \_ (underscore) Any single character [ ] Any single character within the range or set (for example [a-f] or [abcdef]) [^] Any single character not within the specified range (for example [a-f] or [abcdef]) QUESTION 70 You need to detect whether Office 2010 is installed before validating the configuration item. What should you do? A. Create a query-based collection. B. Create an automatic deployment rule. C. Enable Use Windows Installer detection. D. Create a report to display all installed software. Answer: C Explanation: \* Here are the basic steps for adding a Windows Installer detection method: 1. From the Deployment Type Properties dialog, select the Detection Method tab, and click Add Clause . 2. Choose the appropriate setting type. In this case, select Windows Installer , and click the Browse button. 3. Navigate to the desired .msi file and select Open . The product code appears, as By default, the rule looks for only the product code. 4. Click OK to save the detection rule. \* Example: 2016 Braindump2go Valid Microsoft 70-243 Exam Study Materials: 1. | Latest Braindump2go 154q 70-243 PDF and 70-243 VCE Dumps: <http://www.braindump2go.com/70-243.html> [100% Exam Pass Guaranteed!] 2. | New Braindump2go 70-243 Exam Questions PDF - Google Drive: [https://drive.google.com/folderview?id=0B9YP8B9sF\\_gNeFNybGdGYU9wQVU&usp=sharing](https://drive.google.com/folderview?id=0B9YP8B9sF_gNeFNybGdGYU9wQVU&usp=sharing) 3. | More Braindump2go 70-243 Dumps - From 2015 to 2016 - Google Drive: <https://drive.google.com/folderview?id=0B75b5xYLjSSNfkdreTRTTVPzRTBaMmMtbUFuU0RnNzBWNDYyOXNIUndGUEhzOTVabkFzdEk&usp=sharing>