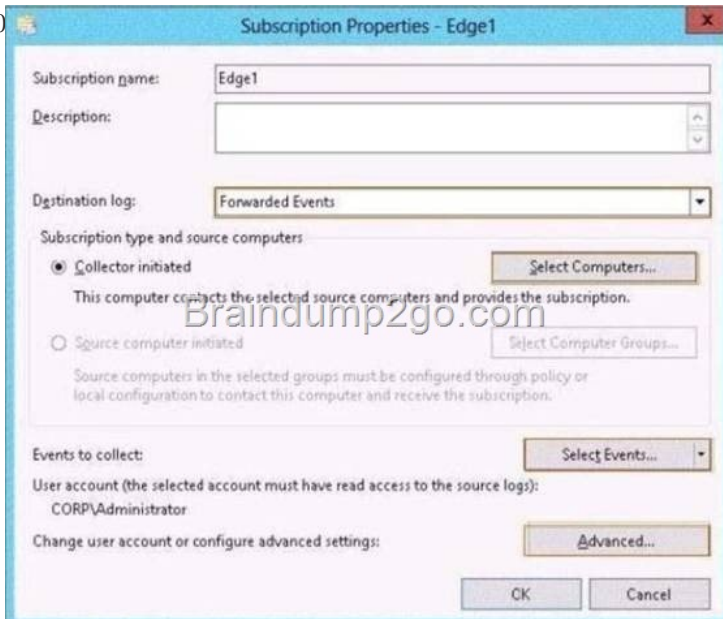


Official 2014 Latest Microsoft 70-411 Exam Dump Free Download(131-140)!

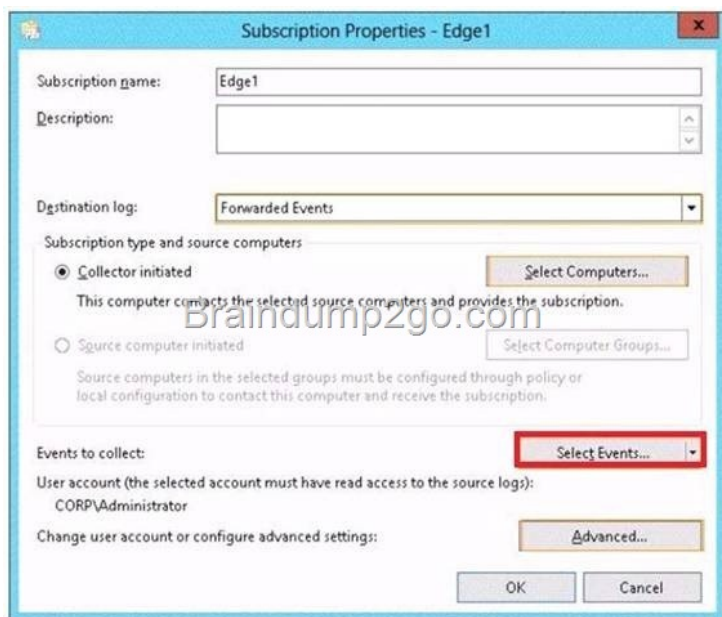
QUESTION 131 Your network contains an Active Directory domain named corp.contoso.com. The domain contains two member servers named Server1 and Edge1. Both servers run Windows Server 2012 R2. Your company wants to implement a central location where the system events from all of the servers in the domain will be collected. From Server1, a network technician creates a collector-initiated subscription for Edge1. You discover that Server1 does not contain any events from Edge1. You view the runtime status of the subscription as shown in the exhibit. (Click the Exhibit button.) You need to ensure that the system events from Edge1 are collected on Server1. What should you modify? To answer, select the appropriate object in the answer area. #160



#160



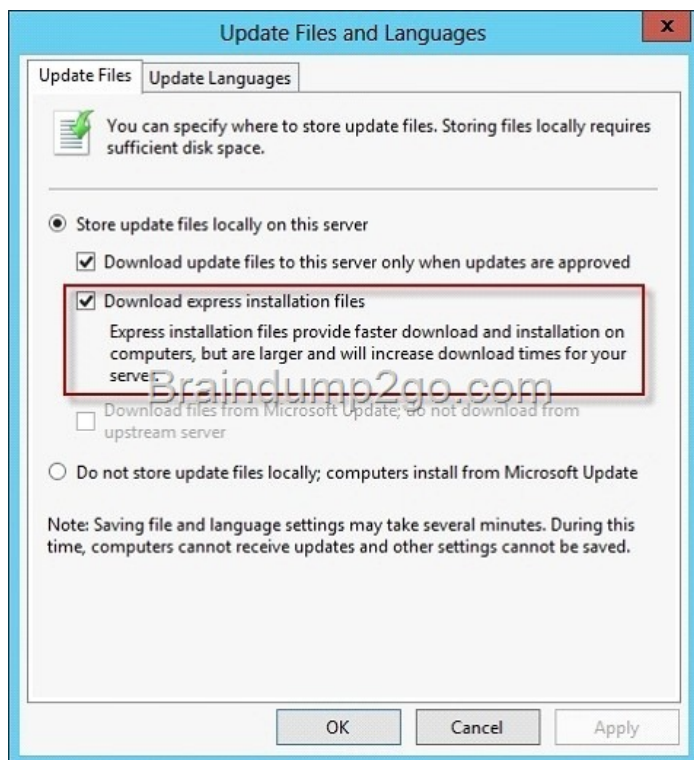
Answer: #160;



Explanation: If you intend to specify a user account by using the Specific User option in Advanced Subscription Settings when creating the subscription, you must ensure that account is a member of the local Administrators group on each of the source computers <http://technet.microsoft.com/en-us/library/cc748890.aspx> QUESTION 132 Your network contains an Active Directory domain named contoso.com. All client computers connect to the Internet by using a server that has Microsoft Forefront Threat Management Gateway (TMG) installed. You deploy a server named Server1 that runs Windows Server 2012 R2. You install the Windows Server Update Services server role on Server1. From the Windows Server Update Services Configuration Wizard, you click Start Connecting and you receive an HTTP error message. You need to configure Server1 to download Windows updates from the Internet. What should you do? A. From the Update Services console, modify the Synchronization Schedule options. B. From Windows Internet Explorer, modify the Connections settings.

C. From Windows Internet Explorer, modify the Security settings. D. From the Update Services console, modify the Update Source and Proxy Server options. Answer: D Explanation: A. Creates a time/schedule to synchronize the WSUS server B. Not an IE issue C. Not an IE issue D. Specifies WSUS to update using MS Update or other WSUS server, configure Proxy server information to TMG server http://technet.microsoft.com/en-us/library/hh852346.aspx#BKM_ConfigureWSUSusingConfigurationWizard QUESTION 133 Your network contains a single Active Directory domain named contoso.com. The domain contains a member server named Server1 that runs Windows Server 2012 R2. Server1 has the Windows Server Updates Services server role installed and is configured to download updates from the Microsoft Update servers. You need to ensure that Server1 downloads express installation files from the Microsoft Update servers. What should you do from the Update Services console? A. From the Automatic Approvals options, configure the Update Rules settings. B. From the Products and Classifications options, configure the Classifications settings. C. From the Products and Classifications options, configure the Products settings. D. From the Update Files and Languages options, configure the Update Files settings. Answer: D

Explanation: To specify whether express installation files are downloaded during synchronization In the left pane of the WSUS Administration console, click Options. In Update Files and Languages, click the Update Files tab. If you want to download express installation files, select the Download express installation files check box. If you do not want to download express installation files, clear the check box.



<http://technet.microsoft.com/en-us/library/cc708431.aspx> <http://technet.microsoft.com/en-us/library/cc708431.aspx> QUESTION 134 You have a VHD that contains an image of Windows Server 2012 R2. You plan to apply updates to the image. You need to ensure that only updates that can install without requiring a restart are installed. Which DISM option should you use?

A. /PreventPending B. /Apply-Unattend C. /Cleanup-Image D. /Add-ProvisionedAppxPackage Answer: A Explanation: -PreventPending Skips the installation of the package if the package or Windows image has pending online actions

<http://technet.microsoft.com/en-us/library/hh852164.aspx> [http://technet.microsoft.com/en-us/library/dd744522\(v=ws.10\).aspx](http://technet.microsoft.com/en-us/library/dd744522(v=ws.10).aspx) [http://technet.microsoft.com/en-us/library/dd744311\(v=ws.10\).aspx](http://technet.microsoft.com/en-us/library/dd744311(v=ws.10).aspx) <http://technet.microsoft.com/en-us/library/hh824882.aspx>

QUESTION 135 Your network contains an Active Directory domain named adatum.com. The domain contains a server named WDS1 that runs Windows Server 2012 R2. You install the Windows Deployment Services server role on WDS1. You have a virtual machine named VM1 that runs Windows Server 2012 R2. VM1 has several line-of-business applications installed. You need to create an image of VM1 by using Windows Deployment Services. Which type of image should you add to VM1 first?

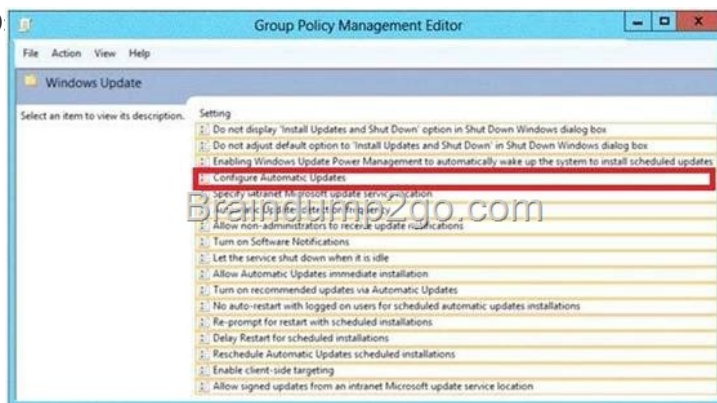
A. Capture B. Install C. Discovery D. Boot Answer: D Explanation: [http://technet.microsoft.com/en-us/library/cc730907\(v=ws.10\).aspx](http://technet.microsoft.com/en-us/library/cc730907(v=ws.10).aspx) <http://technet.microsoft.com/en-us/library/jj648426.aspx>

<http://itadmintips.wordpress.com/2011/05/19/wds-setup-guide-part-2-boot-image-setup/> QUESTION 136 You have a server named Server1 that runs Windows Server 2012 R2. Server1 has the Windows Server Update Services server role installed. You need to configure Windows Server Update Services (WSUS) to support Secure Sockets Layer (SSL). Which three actions should you perform? (Each correct answer presents part of the solution. Choose three.) A. Run the wsutil.exe command. B. From Internet Information Services (IIS) Manager, modify the bindings of the WSUS website. C. From Internet Information Services (IIS) Manager, modify the connection strings of the WSUS website. D. Run the iisreset.exe command. E. Install a server certificate. Answer: ABE Explanation: <http://www.vkernel.ro/blog/configure-wsus-to-use-ssl> 1- First we need to request a certificate for the WSUS web site, so open IIS, click the server name, then open Server Certificates. On the Actions pane click Create Domain Certificate. 2- To add the signing certificate to the WSUS Web site in IIS 7.0 On the WSUS server, open Internet Information Services (IIS) Manager. Expand Sites, right-click the WSUS Web site, and then click Edit Bindings. In the Site Binding dialog box, select the https binding, and click Edit to open the Edit Site Binding dialog box. Select the appropriate Web server certificate in the SSL certificate box, and then click OK. Click Close to exit the Site Bindings dialog box, and then click OK to close Internet Information Services (IIS) Manager. 3- WSUSUtil.exe configuressl <FQDN of the software update point site system> (the name

in your certificate) WSUSUtil.exe configures <Intranet FQDN of the software update point site system>. 4- The next step is to point your clients to the correct url, by modifying the existing GPO or creating a new one. Open the policy Specify intranet Microsoft update service location and type the new url in the form <https://YourWSUSserver>. The gpupdate /force command will just download all the GPO's and re-apply them to the client, it won't force the client to check for updates. For that you need to use wuautil /detectnow. <http://technet.microsoft.com/en-us/library/bb680861.aspx> QUESTION 137 Your network contains an Active Directory domain named contoso.com. The domain contains a server named Server1 that runs Windows Server 2012 R2. Server1 has the Windows Server Update Services server role installed. You have a Group Policy object (GPO) that configures the Windows Update settings. You need to modify the GPO to configure all client computers to install Windows updates every Wednesday at 01:00. Which setting should you configure in the GPO? To answer, select the appropriate setting in the answer area.

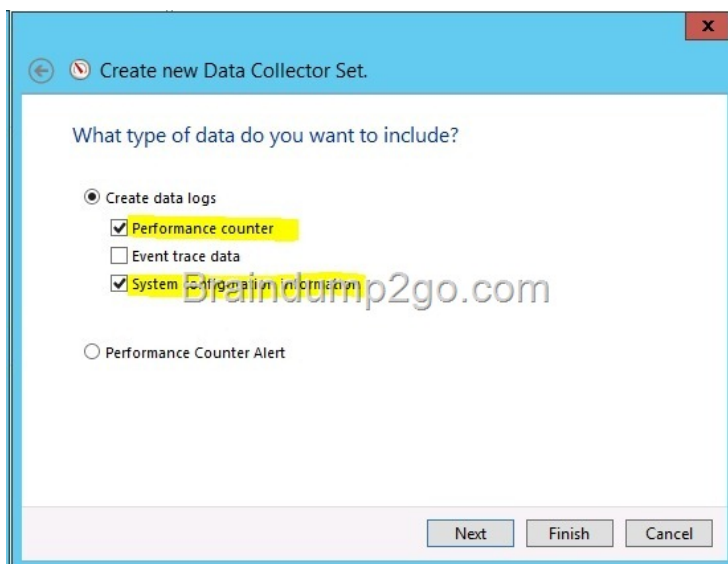


Answer:



Explanation: The settings for this policy enable you to configure how Automatic Updates works. You must specify that Automatic Updates download updates from the WSUS server rather than from Windows Update. QUESTION 138 Your network contains a domain controller named DC1 that runs Windows Server 2012 R2. You create a custom Data Collector Set (DCS) named DCS1. You need to configure DCS1 to collect the following information: - The amount of Active Directory data replicated between DC1 and the other domain controllers - The current values of several registry settings Which two should you configure in DCS1? (Each correct answer presents part of the solution. Choose two.) A. Event trace data B. System configuration information C. A Performance Counter Alert D. A Performance Counter Answer: BD Explanation:

<http://technet.microsoft.com/en-us/library/cc766404.aspx> Automatically run a program when the amount of total free disk space on Server1 drops below 10 percent of capacity. <http://technet.microsoft.com/en-us/library/cc938554.aspx> <http://technet.microsoft.com/en-us/library/cc749337.aspx> Log the current values of several registry settings. System configuration information allows you to record the state of, and changes to, registry keys.



QUESTION 139 You have a VHD that contains an image of Windows Server 2012 R2. You need to apply an update package to the image. Which DISM option should you use? A. /Add-ProvisionedAppxPackage

B. /Cleanup-Image C. /Add-Package D. /Apply-Unattend

Answer: C Explanation: Apply the update package (.msu) file by typing the following at a command prompt, replacing

<file_path> with the full path to the configuration set: DISM /image:C:MyDirMount /Add-Package /Packagepath:<file_path>

[http://technet.microsoft.com/en-us/library/dd744311\(v=ws.10\).aspx](http://technet.microsoft.com/en-us/library/dd744311(v=ws.10).aspx)

[http://technet.microsoft.com/en-us/library/dd744522\(v=ws.10\).aspx](http://technet.microsoft.com/en-us/library/dd744522(v=ws.10).aspx) <http://technet.microsoft.com/en-us/library/hh824882.aspx>

<http://msdn.microsoft.com/en-us/library/ff794819.aspx>

QUESTION 140 Your network contains an Active Directory domain

named contoso.com. The domain contains a server named Server1 that runs Windows Server 2012 R2 and a server named Server2 that has the File Services server role installed. You install the Windows Deployment Services server role on Server1. You plan to use Server2 as a reference computer. You need to create an image of Server2 by using Windows Deployment Services.

Which type of image should you add to Server1 first? A. Boot B. Discovery

C. Install D. Capture Answer: A Explanation: A. Configure the server and add the default images (Install.wim and Boot.wim) that are included on the installation media (in the Sources folder) B. A type of boot image that you can use to install an operating system on a computer that is not Pre-Boot Execution Environment (PXE) enabled.

When you boot a computer into a discover image, a Windows Deployment Services server will be located, and then you can choose the install image you want to install. C. The operating system image that you deploy to the client computer. To create install images using Windows Deployment Services, you must first create a capture image D. A type of boot image that you boot a client computer into to capture the operating system as a .wim file. You must first create a capture image when you are creating custom install images.

[http://technet.microsoft.com/en-us/library/cc730907\(v=ws.10\).aspx](http://technet.microsoft.com/en-us/library/cc730907(v=ws.10).aspx)

<http://technet.microsoft.com/en-us/library/jj648426.aspx>

<http://itadmintips.wordpress.com/2011/05/19/wds-setup-guide-part-2-boot-image-setup/>

Passing Microsoft 70-411 Exam successfully in a short time! Just using Braindump2go's Latest Microsoft 70-411 Dump:

<http://www.braindump2go.com/70-411.html>