

Official 2014 Latest Microsoft 70-411 Exam Dump Free Download(341-350)!

QUESTION 341 Your network contains an Active Directory domain named contoso.com. The domain contains three servers. The servers are configured as shown in the following table.

Server name	Role
Server1	Direct Access and VPN
Server2	File Server
Server3	Hyper-V

You need to ensure that end-to-end encryption is used between clients and Server2 when the clients connect to the network by using DirectAccess. Which two actions should you perform? (Each correct answer presents part of the solution. Choose two.)
A. From the Remote Access Management Console, reload the configuration.
B. Add Server2 to a security group in Active Directory.
C. Restart the IPsec Policy Agent service on Server2.
D. From the Remote Access Management Console, modify the Infrastructure Servers settings.
E. From the Remote Access Management Console, modify the Application Servers settings. Answer: BE

Explanation: When selecting application servers that require end-to-end encryption and authentication, it is important to note that:

- ** The selected end-to-end application servers must be members of one or more AD DS security groups.
- * The selected end-to-end application servers must run Windows Server 2008 or later.
- * The selected end-to-end application servers must be accessible via IPv6 (Native or ISATAP, not NAT64).
- * The selected end-to-end application servers can be used with smart cards for an additional level of authorization.

QUESTION 342 Your network contains an Active Directory domain named contoso.com. All client computers run Windows 8.1. The network contains a shared folder named FinancialData that contains five files. You need to ensure that the FinancialData folder and its contents are copied to all of the client computers. Which two Group Policy preferences should you configure? (Each correct answer presents part of the solution. Choose two.)
A. Shortcuts
B. Network Shares
C. Environment
D. Folders
E. Files Answer: DE

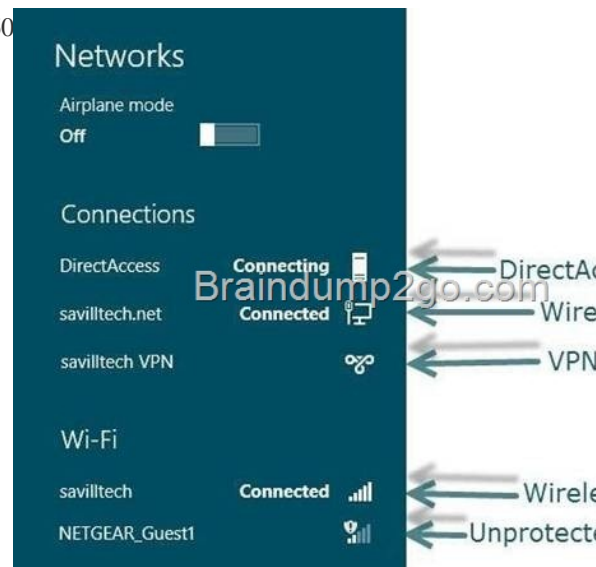
QUESTION 343 Hotspot Question Your network contains an Active Directory domain named contoso.com. You implement DirectAccess. You need to view the properties of the DirectAccess connection. Which connection properties should you view? To answer, select the appropriate connection properties in the answer area.



Answer:



] Explanation: <http://technet.microsoft.com/en-us/library/jj613767.aspx>



QUESTION 344 Your network contains an Active Directory domain named contoso.com. All domain controllers run Windows Server 2012 R2. The domain contains 500 client computers that run Windows 8.1 Enterprise and Microsoft Office 2013. You implement a Group Policy central store. You need to modify the default Microsoft Office 2013 Save As location for all client computers. The solution must minimize administrative effort. What should you configure in a Group Policy object (GPO)?

- A. The Group Policy preferences
- B. An application control policy
- C. The Administrative Templates
- D. The Software Installation settings

Answer: A

QUESTION 345 Your network contains an Active Directory domain named contoso.com. The domain contains a server named NPS1 that has the Network Policy Server server role installed. All servers run Windows Server 2012 R2. You install the Remote Access server role on 10 servers. You need to ensure that all of the Remote Access servers use the same network policies. Which two actions should you perform? (Each correct answer presents part of the solution. Choose two.)

- A. Configure each Remote Access server to use the Routing and Remote Access service (RRAS) to authenticate connection requests.
- B. On NPS1, create a remote RADIUS server group. Add all of the Remote Access servers to the remote RADIUS server group.
- C. On NPS1, create a new connection request policy and add a Tunnel-Type and a Service-Type condition.
- D. Configure each Remote Access server to use a RADIUS server named NPS1.
- E. On NPS1, create a RADIUS client template and use the template to create RADIUS clients.

Answer: BC Explanation: When you configure a remote RADIUS server group in NPS and you configure a connection request policy with the group, you are designating the location where NPS is to forward connection requests.

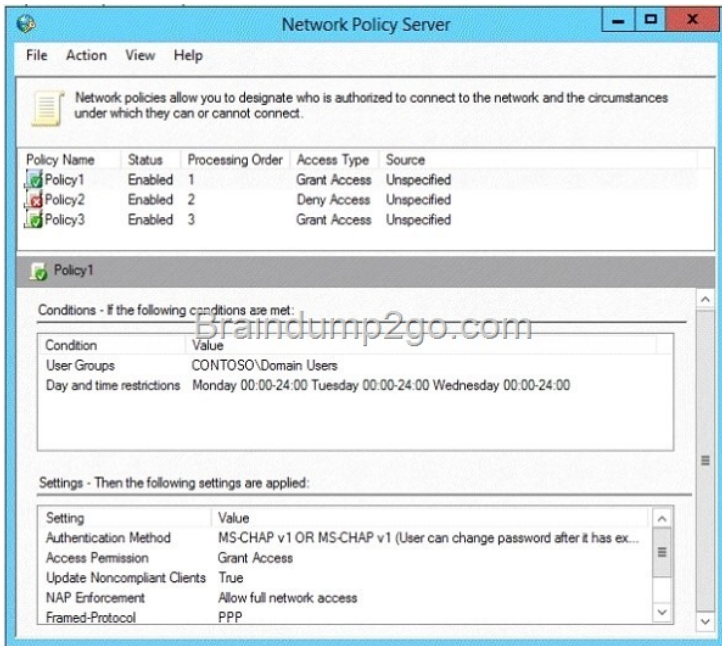
Note: When you configure Network Policy Server (NPS) as a Remote Authentication Dial-In User Service (RADIUS) proxy, you use NPS to forward connection requests to RADIUS servers that are capable of processing the connection requests because they can perform authentication and authorization in the domain where the user or computer account is located.

QUESTION 346 Your network contains a server named Server1 that has the Network Policy and Access Services server role installed. All of the network access servers forward connection requests to Server1. You create a new network policy on Server1. You need to ensure that the new policy applies only to connection requests from the 192.168.0.0/24 subnet. What should you do?

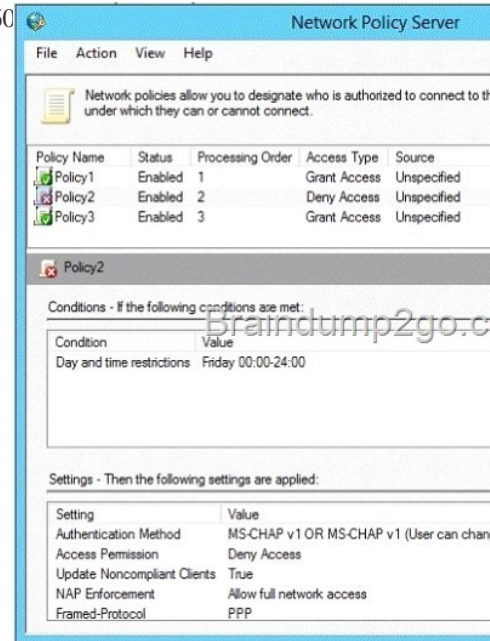
- A. Set the Client IP4 Address condition to 192.168.0.0/24.
- B. Set the Client IP4 Address condition to 192.168.0.
- C. Set the Called Station ID constraint to 192.168.0.0/24.
- D. Set the Called Station ID constraint to 192.168.0.

Answer: B Explanation: Called Station ID condition specifies the network access server telephone number dialed by access client. Client IPv4 Address condition specifies the Internet Protocol (IP) version 4 address of the RADIUS client that forwarded the connection request to the NPS server.

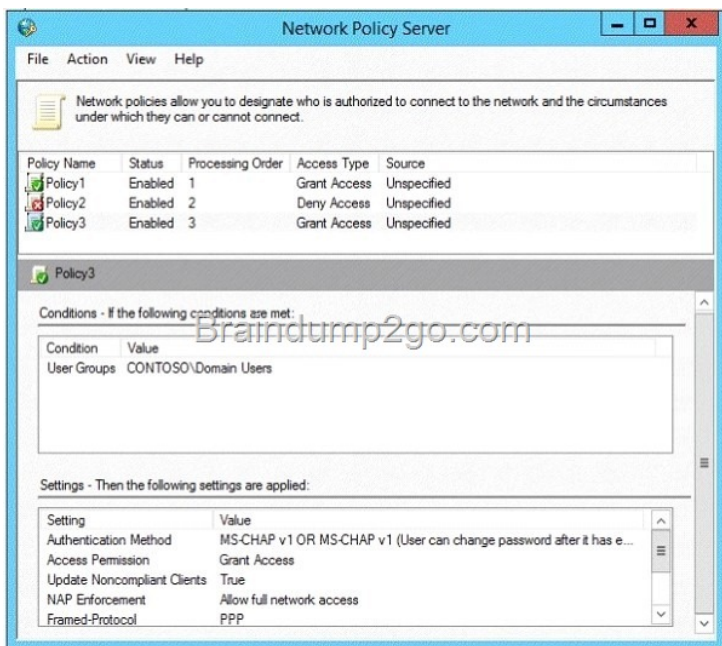
QUESTION 347 Hotspot Question Your network contains an Active Directory named contoso.com. You have users named User1 and user2. The Network Access Permission for User1 is set to Control access through NPS Network Policy. The Network Access Permission for User2 is set to Allow access. A policy named Policy1 is shown in the Policy1 exhibit. (Click the Exhibit button.)



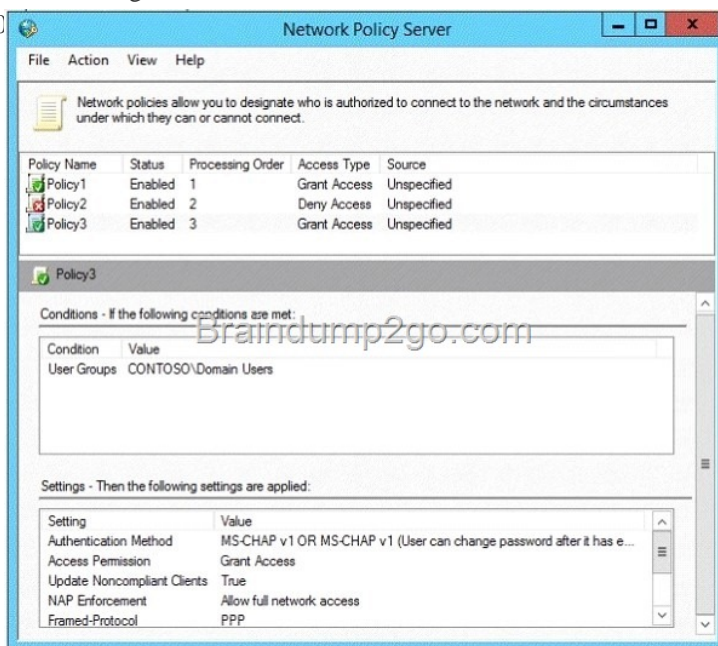
A policy named Policy2 is shown in the Policy2 exhibit. (Click the Exhibit button.)



A policy named Policy3 is shown in the Policy3 exhibit. (Click the Exhibit button.)



For each of the following statements, select Yes if the statement is true. Otherwise, select No. Each correct selection is worth one point.



Answer:

	Yes	No
User1 will be able to establish a VPN connection on Thursday.	<input checked="" type="checkbox"/>	<input type="checkbox"/>
User1 will be able to establish a VPN connection on Friday.	<input type="checkbox"/>	<input checked="" type="checkbox"/>
User2 will be able to establish a VPN connection on Friday.	<input checked="" type="checkbox"/>	<input type="checkbox"/>

QUESTION 348 Drag and Drop Question Your network contains an Active Directory domain named adatum.com. The domain contains a server named Server1 that runs Windows Server 2012 R2. Server1 is configured as a Network Policy Server

(NPS) server and as a DHCP server. You need to log all DHCP clients that have windows Firewall disabled. Which three actions should you perform in sequence? To answer, move the three appropriate actions from the list of actions to the answer area and arrange them in the correct order.

#160

Actions	Answer Area
Create a connection request policy.	
Create a network policy.	
Create a remediation server group.	
Create a Windows Security Health Validator (WSHV) configuration.	
Create a health policy.	

Answer: #160

Actions	Answer Area
Create a connection request policy.	Create a Windows Security Health Validator (WSHV) configuration.
Create a network policy.	Create a health policy.
Create a remediation server group.	Create a network policy.
Create a Windows Security Health Validator (WSHV) configuration.	
Create a health policy.	

QUESTION 349 Drag and Drop Question You have a WIM file that contains an image of Windows Server 2012 R2. Recently, a technician applied a Microsoft Standalone Update Package (MSU) to the image. You need to remove the MSU package from the image. Which three actions should you perform in sequence? To answer, move the appropriate three actions from the list of actions to the answer area and arrange them in the correct order.

#160

Actions	Answer Area
Run dism.exe and specify the <code>/Capture-Image</code> parameter.	
Run dism.exe and specify the <code>/Apply-Image</code> parameter.	
Run wusa.exe and specify the <code>/uninstall</code> parameter.	
Run dism.exe and specify the <code>/RemovePackage</code> parameter.	
Run dism.exe and specify the <code>/Cleanup-Image</code> parameter.	

Answer: #160

Actions	Answer Area
Run dism.exe and specify the <code>/Capture-Image</code> parameter.	Run wusa.exe and specify the <code>/uninstall</code> parameter.
Run dism.exe and specify the <code>/Apply-Image</code> parameter.	
Run wusa.exe and specify the <code>/uninstall</code> parameter.	Run dism.exe and specify the <code>/RemovePackage</code> parameter.
Run dism.exe and specify the <code>/RemovePackage</code> parameter.	Run dism.exe and specify the <code>/Cleanup-Image</code> parameter.
Run dism.exe and specify the <code>/Cleanup-Image</code> parameter.	

QUESTION 350 Hotspot Question Your company has two offices. The offices are located in Montreal and Seattle. The network contains an Active Directory domain named contoso.com. The domain contains servers named Server1 and Server2. Server1 is located in the Seattle office. Server2 is located in the Montreal office. Both servers run Windows Server 2012 R2 and have the Windows Server Update Services (WSUS) server role installed. You need to configure Server2 to download updates that are approved on Server1 only. What cmdlet should you run? To answer, select the appropriate options in the answer area.

#160

Answer Area															
<table border="1"><tr><td>Add-WsusComputer</td><td>Set-ServerName Server1</td><td>Replica</td></tr><tr><td>Approve-WsusUpdate</td><td>-UpdateServer Server1</td><td>-SyncFromMu</td></tr><tr><td>Set-WsusClassification</td><td>-UssServerName Server1</td><td>-UseSsl</td></tr><tr><td>Set-WsusProduct</td><td></td><td></td></tr><tr><td>Set-WsusServerSynchronizat</td><td></td><td></td></tr></table>	Add-WsusComputer	Set-ServerName Server1	Replica	Approve-WsusUpdate	-UpdateServer Server1	-SyncFromMu	Set-WsusClassification	-UssServerName Server1	-UseSsl	Set-WsusProduct			Set-WsusServerSynchronizat		
Add-WsusComputer	Set-ServerName Server1	Replica													
Approve-WsusUpdate	-UpdateServer Server1	-SyncFromMu													
Set-WsusClassification	-UssServerName Server1	-UseSsl													
Set-WsusProduct															
Set-WsusServerSynchronizat															

Answer:

Answer Area

<ul style="list-style-type: none">Add-WsusComputerApprove-WsusUpdateSet-WsusClassificationSet-WsusProductSet-WsusServerSynchronizatio	<ul style="list-style-type: none">UseServerName Server1-UpdateServer Server1-UseServerName Server1	<ul style="list-style-type: none">-Replica-SyncFromMu-UseSsl
---	--	--

Passing Microsoft 70-411 Exam successfully in a short time! Just using Braindump2go's Latest Microsoft 70-411 Dump:
<http://www.braindump2go.com/70-411.html>