

## Official 2014 Latest Microsoft 70-411 Exam Dump Free Download(331-340)!

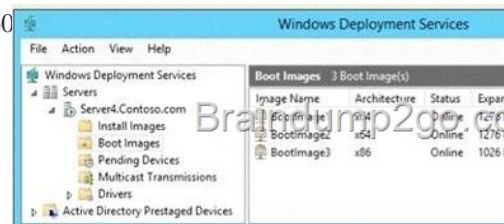
**QUESTION 331** Your network contains an Active Directory domain named adatum.com. A network administrator creates a Group Policy central store. After the central store is created, you discover that when you create new Group Policy objects (GPOs), the GPOs do not contain any Administrative Templates. You need to ensure that the Administrative Templates appear in new GPOs. What should you do? A.&#160;&#160;&#160; Add your user account to the Group Policy Creator Owners group. B.&#160;&#160;&#160; Configure all domain controllers as global catalog servers. C.&#160;&#160;&#160; Copy files from %Windir%\Policydefinitions to the central store. D.&#160;&#160;&#160; Modify the Delegation settings of the new GPOs.

**Answer: C** **QUESTION 332** Your network contains two Active Directory forests named contoso.com and dev.contoso.com. The contoso.com forest contains a domain controller named DC1. The dev.contoso.com forest contains a domain controller named DC2. Each domain contains an organizational unit (OU) named OU1. Dev.contoso.com has a Group Policy object (GPO) named GPO1. GPO1 contains 200 settings, including several settings that have network paths. GPO1 is linked to OU1. You need to copy GPO1 from dev.contoso.com to contoso.com. What should you do first on DC2? A.&#160;&#160;&#160; From the Group Policy Management console, right-click GPO1 and select Copy. B.&#160;&#160;&#160; Run the mtdit.exe command and specify the /Domaintcontoso.com /DC:DC 1 parameter. C.&#160;&#160;&#160; Run the Save-NetGpocmdlet. D.&#160;&#160;&#160; Run the Backup-Gpocmdlet. **Answer: D**

**QUESTION 333** You manage a server that runs Windows Server 2012 R2. The server has the Windows Deployment Services server role installed. You have a desktop computer that has the following configuration: - Computer name: Computer1 - Operating system: Windows 8 - MAC address: 20-CF-30-65-D0-87 - GUID: 979708BF-C04B-4525-9FE0-C4150BB6C618 You need to configure a pre-staged device for Computer1 in the Windows Deployment Services console. Which two values should you assign to the device ID? (Each correct answer presents a complete solution. Choose two.) A.&#160;&#160;&#160; 20CF3065D08700000000000000000000 B.&#160;&#160;&#160; 979708BFC04B45259FE0C4150BB6C618 C.&#160;&#160;&#160; 979708BF-C04B-452S-9FE0-C4150BB6C618 D.&#160;&#160;&#160; 00000000000000000000000020CF306SD087 E.&#160;&#160;&#160; 00000000-0000-0000-0000-C41S0BB6C618 **Answer: CD**

**Explanation:** \* To add or remove pre-staged client to/from AD DS, specify the name of the computer or the device ID, which is a GUID, media access control (MAC) address, or Dynamic Host Configuration Protocol (DHCP) identifier associated with the computer. \* Example: Remove a device by using its ID from a specified domain This command removes the pre-staged device that has the specified ID. The cmdlet searches the domain named TSQA.Contoso.com for the device. Windows PowerShell PS C:> Remove-WdsClient -DeviceID

"5a7a1def-2e1f-4a7b-a792-ae5275b6ef92" -Domain -DomainName "TSQA.Contoso.com" **QUESTION 334** Hotspot Question You have a server named Server4 that runs Windows Server 2012 R2. Server4 has the Windows Deployment Services server role installed. Server4 is configured as shown in the exhibit. (Click the Exhibit button.) &#160;



To answer, complete each statement according to the information presented in the exhibit. Each correct selection is worth one point. &#160;

**Answer Area**

When you connect to Windows Deployment Services (WDS) from an x64 client computer, you can select ...

BootImage3 only.  
BootImage1 and BootImage2 only.  
BootImage2 and BootImage3 only.  
BootImage1, BootImage2, and BootImage3

When you connect to Windows Deployment Services (WDS) from an x64 client computer, the default image will be ...

BootImage1.  
BootImage2.  
BootImage3.

**Answer:** &#160;

Answer Area

When you connect to Windows Deployment Services (WDS) from an x64 client computer, you can select ...

▼

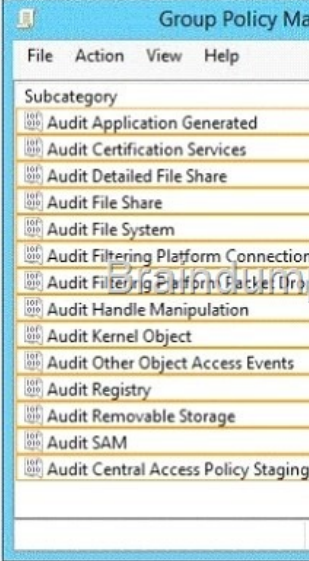
BootImage3 only.  
BootImage1 and BootImage2 only.  
BootImage2 and BootImage3 only.  
BootImage1, BootImage2, and BootImage3

When you connect to Windows Deployment Services (WDS) from an x64 client computer, the default image will be ...

▼

BootImage1.  
BootImage2.  
BootImage3.

QUESTION 335 Hotspot Question Your network contains an Active Directory domain named contoso.com. All servers run Windows Server 2012 R2. You need to audit successful and failed attempts to read data from USB drives on the servers. Which two objects should you configure? To answer, select the appropriate two objects in the answer area. &#160;



Answer: &#160;

Group Policy Management Editor

Subcategory	Audit Events
Audit Application Generated	Not Configured
Audit Certification Services	Not Configured
Audit Detailed File Share	Not Configured
Audit File Share	Not Configured
Audit File System	Not Configured
Audit Filtering Platform Connection	Not Configured
Audit Filtering Platform File System	Not Configured
Audit Handle Manipulation	Not Configured
Audit Kernel Object	Not Configured
Audit Other Object Access Events	Not Configured
Audit Registry	Not Configured
Audit Removable Storage	Not Configured
Audit SAM	Not Configured
Audit Central Access Policy Staging	Not Configured

QUESTION 336 Hotspot Question Your network contains an Active Directory domain named contoso.com. The domain contains servers named Server1 and Server2. Both servers have the DFS Replication role service installed. You need to configure the DFS Replication environment to meet the following requirements: - Increase the quota limit of the staging folder. - Configure the staging folder cleanup process to provide the highest amount of free space possible. Which cmdlets should you use to meet each requirement? To answer, select the appropriate options in the answer area. &#160;

#### Answer Area

Increase the quota limit of the staging folder.

Configure the staging folder cleanup process to provide the highest amount of free space possible.

Set-DfsrGroupSchedule  
Set-DfsrMembership  
Set-DfsrReplicatedFolder  
Set-DfsrServiceConfiguration

Set-DfsrGroupSchedule  
Set-DfsrMembership  
Set-DfsrReplicatedFolder  
Set-DfsrServiceConfiguration

Answer: &#160; Answer Area

Increase the quota limit of the staging folder.

Configure the staging folder cleanup process to provide the highest amount of free space possible.

Set-DfsrGroupSchedule  
Set-DfsrMembership  
Set-DfsrReplicatedFolder  
Set-DfsrServiceConfiguration

Set-DfsrGroupSchedule  
Set-DfsrMembership  
Set-DfsrReplicatedFolder  
Set-DfsrServiceConfiguration

] QUESTION 337 You have a server named Server1 that runs Windows Server 2012 R2. Server1 has the File Server Resource Manager role service installed. Each time a user receives an access-denied message after attempting to access a folder on Server1, an email notification is sent to a distribution list named DL1. You create a folder named Folder1 on Server1, and then you configure custom NTFS permissions for Folder1. You need to ensure that when a user receives an access-denied message while attempting to access Folder1, an email notification is sent to a distribution list named DL2. The solution must not prevent DL1 from receiving notifications about other access-denied messages. What should you do? A.&#160;&#160;&#160; From Server Manager, run the New Share Wizard to create a share for Folder1 by selecting the SMB Share - Advanced option. B.&#160;&#160;&#160; From the File Server Resource Manager console, modify the Access-Denied Assistance settings. C.&#160;&#160;&#160; From the File Server Resource Manager console, modify the Email Notifications settings. D.&#160;&#160;&#160; From Server Manager, run the New Share Wizard to create a share for Folder1 by selecting the SMB Share -Applications option. Answer: C Explanation: Configure the email notification settings You must configure the email notification settings on each file server that will send the access-denied assistance messages. Open File Server Resource Manager. In Server Manager, click Tools, and then click File Server Resource Manager. Right-click File Server Resource Manager (Local), and then click Configure Options. Click the Email Notifications tab. Configure the following settings: Click Send Test E-mail to ensure that the email notifications are configured correctly. Click OK. QUESTION 338 Hotspot Question Your network contains an Active Directory domain named contoso.com. The domain contains a server named Server1 that runs Windows Server 2012 R2. Server1 has the File Server Resource Manager role service installed. You need to configure Server1 to meet the following requirements: - Ensure that old files in a folder named Folder1 are archived automatically to a folder named Archive1. - Ensure that all storage reports are saved to a network share. Which two nodes should you configure? To answer, select the appropriate two nodes in the answer area. &#160;



Answer: &#160;



QUESTION 339 Your network contains an Active Directory domain named contoso.com. The domain contains a read-only domain controller (RODC) named RODC1. You create a global group named RODC\_Admns. You need to provide the members of RODC\_Admns with the ability to manage the hardware and the software on RODC1. The solution must not provide RODC\_Admns with the ability to manage Active Directory objects. What should you do? A.&#160;&#160;&#160; From Active Directory Site and Services, configure the Security settings of the RODC1 server object. B.&#160;&#160;&#160; From Windows PowerShell, run the Set-ADAccountControlcmdlet. C.&#160;&#160;&#160; From a command prompt, run the dsmsgmt local roles command. D.&#160;&#160;&#160; From Active Directory Users and Computers, configure the Member Of settings of the RODC1 account. Answer: C Explanation: RODC: using the dsmsgmt.exe utility to manage local administrators One of the benefits of of RODC is that you can add local administrators who do not have full access to the domain administration. This gives them the abiltiy to manage the server but not add or change active directory objects unless those roles are delegated. Adding this type of user is done using the dsmdmt.exe utility at the command prompt. QUESTION 340 Your network contains an Active Directory domain named contoso.com. You need to install and configure the Web Application Proxy role service. What should you do? A.&#160;&#160;&#160; Install the Active Directory Federation Services server role and the Remote Access server role on different servers. B.&#160;&#160;&#160; Install the Active Directory Federation Services server role and the Remote Access server role on the same server. C.&#160;&#160;&#160; Install the Web Server (IIS) server role and the Application Server server role on the same server. D.&#160;&#160;&#160; Install the Web Server (IIS) server role and the Application Server server role on different servers. Answer: A Explanation: AD FS is required to provide authentication and authorization services to Web Application Proxy and to store the Web Application Proxy configuration. Remote Access is the role containing the Web Application Proxy role service. (<http://technet.microsoft.com/en-us/library/dn383650.aspx>) Passing Microsoft 70-411 Exam successfully in a short time! Just using Braindump2go's Latest Microsoft 70-411 Dump: <http://www.braindump2go.com/70-411.html>